

MONEY MAGIC



1529

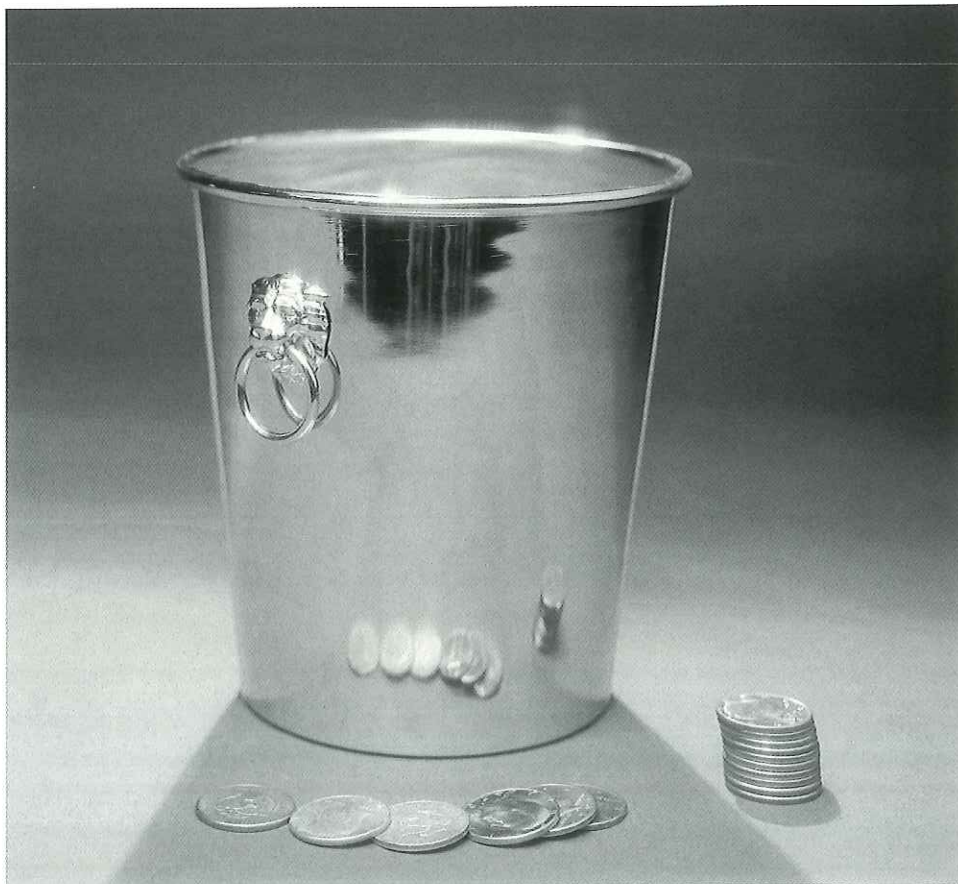
OWEN DENVER MINT

The principal of the money maker has been a very successful entertainment piece of magic for many decades. However never has there been one crafted with such painstaking care to detail and with such exquisite design as the Owen Denver Mint. The first model was commissioned by a very prominent and wealthy antique dealer to be used on his personal desk as an attention getter and a fine item of mystery and amusement. The effect of turning plain paper to genuine paper money by the turn of a crank is truly amazing. Each Denver Mint is crafted of fine exotic woods, hand formed brass gears and fittings, creating a magical masterpiece to grace the home of any connoisseur of fine craftsmanship.



1511
SLICKER COIN TRAY

This wonderful tray will add coins to a number placed upon it. It will exchange coins or remove them surreptitiously. The tray is made of select rare hardwoods and contains no moving parts, yet is perfect in operation as only Owen can make it.



1501
OWEN COIN PAIL

This pail for the miser's dream of gleaming alloy metal is highly plated, and is spun to ring like a bell as each coin is dropped. No gimmicks are visible on this pail and it comes in either half or silver dollar size.



1512

COLLECTORS COINS

These new coins are unlike any coins ever before minted. Each coin contains approximately one ounce of pure .999 fine silver, 1-½" diameter and with an antique finish. Perhaps the most beautiful magical coin ever produced. The design is exclusively Owen and a perfect masterpiece of fine engraving. Only a limited number of this edition has been struck, each with the Owen, Taylor and Thayer Mfg. Co. hallmarks.



1528

CRYSTAL MONEY CHEST

Another fine example of superb and astonishing visible magic to entertain not only the magician, but more importantly his audience. To fill with money to overflowing an obviously empty chest is sheer magic. A single dollar bill is tossed into the box and immediately, with no covering, is visibly transformed into a full chest of bills. The chest itself is constructed of crystal clear lucite trimmed with stainless steel. One performer was enabled to sell a million dollar endowment program with the utilization of this chest to enhance his discourse on the multiplication of invested wealth. The Crystal Money Chest is visible magic at its finest.



1525

LITTLE BRASS BOXES

Used in such classic effects as The Coin In Ball of Wool, these small nested brass boxes provide a baffling conclusion to any effect in which a marked coin is vanished and recovered. The brass box is handed to a spectator who finds another smaller box nested in it. He is handed a key to open the inner box and there lies the previously marked coin.



1504

COIN OF THE REALM

Perfected by Carl Owen for Thayer Mfg., a company we also own, and made today in true Owen Quality. The power of the almighty dollar is demonstrated when a silver dollar penetrates a sheet of solid glass leaving no trace of its passage. The glass is recessed in a beautiful polished wood box trimmed with brass hardware.

26

MONEY MAGIC

1502

SILVER DOLLAR BOX

The so-called Okito Box with an extra removable load chamber which permits many more impossibilities than the standard item. Made in silver dollar size yet may be used with any smaller sized coins and even folded bills.

1517

SMALL COIN BOX

This coin box is of heavy gauge spun brass highly polished with a lacquer finish. An excellent accessory for the close-up worker. Many fine effects can be performed with this device.



1520

OWEN

COIN LADDER

Without a doubt the most beautiful coin ladder on the market today. This ladder has an all chrome and glass look about it. All polished aluminum and real glass set on a sturdy cast aluminum base. The magician plucks coins from the air and drops them onto the cascading glass plates. A beautiful sound emits as the coins strike each plate. Built into the ladder is a load chamber which releases each coin automatically allowing the performer to use only one coin for the productions from the air. Another load chamber allows for a large stack of coins to be stolen for a waterfall finish.





1510
COIN WAND

The Owen designed coin wand is an up to date classic. At the tip of the wand a genuine half dollar appears or vanishes at the magician's will. Mechanically perfect, made of sturdy metal. Finished black with gold tips and both ends of the wand are closed when not in use. The coin may be shown on both sides and nothing unusual can be detected even when held as close as 18".



1503
COIN IN BALL OF YARN

A borrowed and marked coin is vanished and attention called to a handsome wood box which has been in full view throughout the entire performance. Taking and opening the box a second box is discovered within. This box when opened discloses a large ball of wool within. The wool is unwound, revealing a small parcel which upon being unwrapped proves to be a small box. Inside this last box the spectator finds his original marked coin.

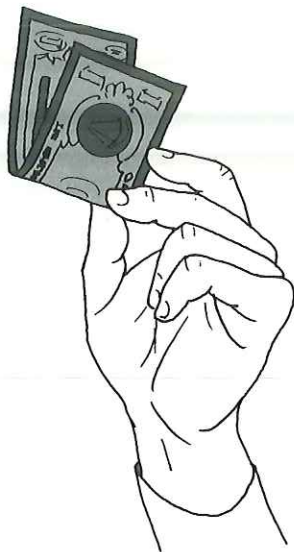
**1507
DOUBLE
COIN BOX**

A coin is placed in one compartment of a small 4 door wood box. The doors are closed and the coin can be heard sliding from one compartment to the other, showing first one compartment and then the other. After a bit of byplay all four doors are opened showing the coin to be really vanished. The box is pocket size and made of fine, rare hardwoods.



**1505
MERV TAYLOR MONEY MAKER**

The magician places the end of a blank roll of paper into the rollers of a machine, turns the knob and out comes real money in a strip which he proceeds to cut apart into regulation bills. The money is real and the effect visually startling.



1519

MONEY FROM AIR

This Owen supreme gimmick allows you to catch 20 or more bills from the air with ease. Why not catch enough to buy this punch effect from Owen Magic for your act?



1515

SPRING BILLS

10 Bills in a packet of Owen spring bills. A packet will make an excellent surprise production at any point in your act.



1521

ROBERT HOUDIN COIN BOX

For the discriminating magician who desires to own a rare magic masterpiece. Owen Magic has reproduced a limited number of Robert Houdin's coin boxes which vanish four half dollars one at a time. Each time the lid of the chest is closed and opened another coin has vanished. Made in rare woods this Owen Chest has the added feature of having the coins reappear after they have vanished. An ingenious mechanism accomplishes the effect with no sleight of hand necessary. This coin box is available in a reverse model which produces the coins one at a time and then vanishes all four half-dollars.